

inpO2

Release Notes – v. 3.5.3

August 12, 2009

1. *What's New in inpO2 v. 3.5*
2. *Minimum System Requirements*
3. *Installation*
4. *License Activation & Upgrade*
5. *Upgrade Compatibility with inpO2 version 1.x or 2.x*
6. *Known Issues and Limitations*
7. *Enhancements and Fixes in v.3.5.0*
8. *Fix in v.3.5.1 (Windows only)*
9. *Enhancements and Fixes in v.3.5.2*
10. *Enhancements and Fixes in v.3.5.3*
11. *Customer Feedback*

1. What's New in inpO2 v. 3.5

This section only highlights the changes in the current 3.5 release compared to the previous 3.0.3 version. For a complete feature list, refer to inpO2 brochure or User Manual.

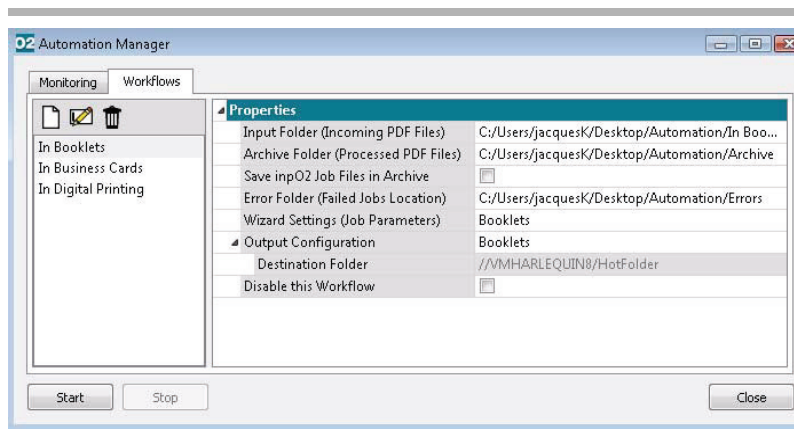
1.1 Hot Folder Automation (starting with v.3.5.2)

As announced earlier this year, Dynagram ships its inpO2 Automation module. inpO2 Automation is based on one or many hot folders defined with the Automation Manager. Each active hot folder is instructed, via a Wizard preset and an output configuration preset, on how to process the imposition job.

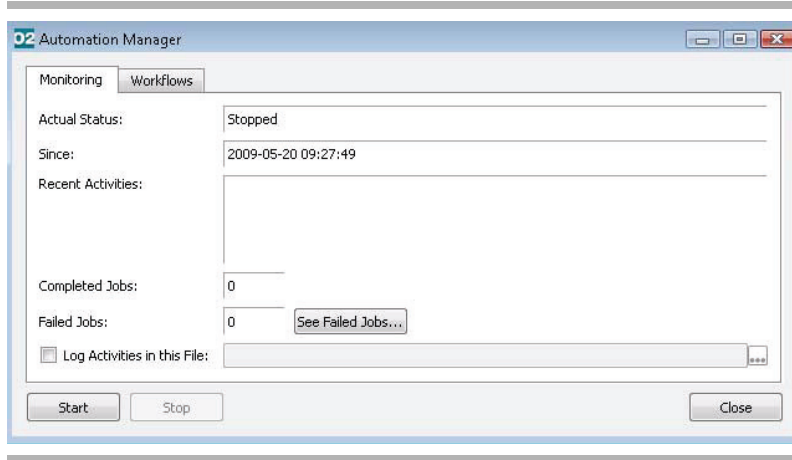
When inpO2 Automation is activated, the automated imposition process will be triggered by simply placing a source pdf document in one of the active hot folders. Many production workflows can be configured to generate various types of jobs: step & repeat, cut & stack, saddle-stitched, etc. The page format can be fixed or entirely adapted to the source document.

The most obvious part of this addition is the Automation Manager, by which inpO2 Automation actions and events are controlled. It consists of two panels, Workflows and Monitoring, where hot folders are created and monitored.

inpO2 Automation Workflows Panel



inpO2 Automation Monitoring Panel



After the files put in the hot folders have been processed, users (or other production processes) can pick up the terminated jobs in the workflows' destination folders.

1.2 New Licensing & Modules Structure

inpO2 is now offered in six modules: Wizard, Layout Editor, Assembly Planner, Optimization, Automatisisation and JDF Export.

The Wizard is the base module. The Layout Editor license adds the complete light table and tools, a prerequisite for other optional modules.

The following table indicates which features are included in each inpO2 module.

Modules / Features	Wizard (always included)	Layout Editor (needs Wizard)	Assembly Planner (needs Layout Editor)	Optimization (needs Layout Editor)	Automation (Needs Wizard)	JDF Export (needs Layout Editor)
Network Licensing			X			
Wizard	X					
Light Table / Imposition Objects		X				
Plates			X			
Presets		X				
Default inpO2 Profiles	X					
Profiles Edition			X			
Mark Sets			X			
Layout Checkpoints		X				
Step & Repeat tool				X		
Page Section Tool			X			
Document Manager		X				
Page Adjustments			X			
Ink Manager			X	X		
Assembly Manager			X			
Template Export/Import			X			

Template Export for ATM			X			
Web press pagination algorithms			X			
Come and Go pagination			X			
Planning for bound jobs			X			
Sheet optimization for ganging				X		
Hot Folder Automation					X	
PDF Output	X					
JDF Output						X

All modules can be purchased separately or in packages. More information about product offerings can be found on the web site or by contacting sales@dynagram.com.

1.3 Special inpO2 Wizard Edition for OEMs

Starting with v.3.5, a special inpO2 Wizard Edition is available for OEMs. This edition requires no dongle and can be activated on line. An Internet connection is needed.

This entry-level edition contains the base Wizard module only.

1.4 Export to Apogee Template Manager (ATM)

inpO2 layouts can now be exported for Agfa's Apogee Prepress® and used within the Template Manager module (ATM).

The new function Export Template for ATM can be accessed via Acrobat's File menu. Before exporting the template, the user is allowed to modify its properties in order to ease the organization of the files and the correct filtering of the signatures for the creation of imposed jobs in ATM.

Although inpO2 and Apogee have somewhat different approaches and object structures to manipulate imposition data, they share an interesting amount of common containers and building blocks that allow compatible exports from inpO2 to Apogee.

Templates for ATM may contain references expecting register mark images in the marks folder of Apogee ATM. These images are provided on the CD and available for download on Dynagram's web site.

1.5 Simplified Creation of Presets

The mechanism of creating and saving presets has been redesigned. Users will now explicitly create and save their presets in the presets dialogs or in contextual menus. Duplicating an existing preset item in the list is also possible to speed up the creation process.

All modifications applied to preset items are saved at once when clicking on Save before closing the dialog. Cancel will retain no modifications.

Modifying properties of existing presets on the light table will no more generate *Custom* presets. However, viewing and editing properties of layout objects from the inpO2 menu *Show/Hide > Objects Properties* will still show *Custom* if no match is found in the presets list.

The use of checkboxes in Presets dialogs is also simplified.

1.6 Customizable Side Guides

In a number of production environments, more elaborate side guides shapes and positioning abilities are needed to help control and monitor possible shifting of the paper during printing operations.

From the *Sheet and Plate* properties panel, you can now choose among installed presets or even import you own custom PDF image. Moreover, you can configure the side guides' offsets from the sheet edges or from the gripper with complete flexibility.

1.7 New Option for Output File Delivery

The Output Configuration window now offers a new setting for output file delivery.

Users will be able to output their imposition into the same folder as the source document, job after job, without having to browse. This option will ensure seamless integration with various PDF workflows. It is also available using JDF.

This option is added to the two existing settings for predefined folder (usually the RIP folder on the network) and for any folder manually selected at the time of output.

Limitation: If document files for the imposition project come from different folders, the first document folder found in the run list will be used.

1.8 Editable Run Length in Ganging Optimization

The statistics field *Run Length* of the *Press Run* object is now editable, which will help users to adjust products quantities without changing the optimized layout.

1.9 Installed Presets

For new installations, a catalog of presets is now available in imperial or metric values. A selection must be done at installation time. New presets are also provided with the installer for imported images (take off bars) and side guide images.

To access those new presets, the previous version of inpO2 must be uninstalled prior to install version 3.5 (this will reset the catalogue to the presets provided in version 3.5).

1.10 Cosmetic Changes

inpO2 v.3.5 presents a new look and feel with new logo, application and file icons, and overall packaging.

The inpO2 About box has also been enhanced to give more explicit information about version, installed modules and dongle status.

2. Minimum System Requirements

2.1 Windows

<i>Acrobat 8 for Windows</i>	<i>Acrobat 9 for Windows</i>
<p>Software Requirements</p> <ul style="list-style-type: none"> • Adobe® Acrobat® Standard or Professional (recommended) - Version 8.x <p>Hardware and Systems Requirements</p> <ul style="list-style-type: none"> • Intel® Pentium® III processor or equivalent • Windows Server 2003 SP1, Windows XP SP2 or Windows Vista • Microsoft Internet Explorer 6 or 7 • 256 MB of RAM (512 MB recommended) • 860 MB of available hard-disk space • 1,024 x 768 screen resolution (1,280 x 1,024 recommended) • CD-ROM drive, if installing from a CD • USB Port for hardware key 	<p>Software Requirements</p> <ul style="list-style-type: none"> • Adobe® Acrobat® Standard, Professional (recommended) or Pro Extended - Version 9.x <p>Hardware and Systems Requirements</p> <ul style="list-style-type: none"> • 1.3 Ghz processor or higher • Microsoft® Windows® Server 2003 SP1, Windows XP SP2 or Windows Vista • Microsoft Internet Explorer 6 or higher • 256 MB of RAM (512 MB recommended) • 860 MB of available hard-disk space • 1,024 x 768 screen resolution (1,280 x 1,024 recommended) • CD-ROM drive, if installing from a CD • USB Port for hardware key

2.2 Macintosh

<i>Acrobat 8 for Macintosh</i>	<i>Acrobat 9 for Macintosh</i>
<p>Software Requirements</p> <ul style="list-style-type: none"> • Adobe® Acrobat® Professional - Version 8.x <p>Hardware and Systems Requirements</p> <ul style="list-style-type: none"> • PowerPC® G4, G5 processor (G5 recommended), or Intel® processor • Mac OS X v.10.4.3 or 10.5 (Adobe Acrobat 8.1.2+ is needed for full 10.5 compatibility) • 256 MB of RAM (512 MB recommended) • 1060 MB of available hard-disk space • 1,024 x 768 screen resolution (1,280 x 1,024 recommended) • CD-ROM drive, if installing from a CD • USB Port for hardware key 	<p>Software Requirements</p> <ul style="list-style-type: none"> • Adobe® Acrobat® Professional - Version 9.x <p>Hardware and Systems Requirements</p> <ul style="list-style-type: none"> • PowerPC® G4, G5 processor (G5 recommended), or Intel® processor • Mac OS X v.10.4.9 or 10.5 • 256 MB of RAM (512 MB recommended) • 1060 MB of available hard-disk space • 1,024 x 768 screen resolution (1,280 x 1,024 recommended) • Safari 2.0.4+ browser • CD-ROM drive, if installing from a CD • USB Port for hardware key

3. Installation

3.1 Installing Special Editions

inpO2 Network

In addition to the steps below, see the *Installing inpO2 Network* booklet provided with the HASP-HL Net USB key for all instructions regarding the installation of your multiple-license package.

Wizard Edition for OEMs

This entry-level edition of inpO2 is software protected and requires no dongle. The following installation steps apply but please disregard information pertaining to dongles and HASP drivers.

3.2 Macintosh OS X

- Before starting the installation, ensure that your USB dongle is NOT connected to your computer.
- Double-click the “inpO2” installation file.
- Follow the instructions of the Installer.
- If you have more than one instance of Adobe Acrobat on your computer, select the one into which you want to install inpO2 plug in.
- At the end of the inpO2 installation, the HASP driver installer will be launched. This installation is required for the proper functioning of the USB hardware key (dongle). Make sure the dongle is not connected until the process is completed.
- NOTE: If you already have a HASP driver installed on your workstation for a third party application, a message will warn you that HASP cannot be installed on this computer. Simply close the dialogue.
- Once the process is completed, inpO2 will be found in the plug-ins folder of the Acrobat instance that you have selected.
- The next step is to activate your license (see section 4 below).
- Here is the list of all installed files on Mac OS X:
 - inpO2 plug-in
 /Applications/Adobe Acrobat 8.0 (or 9.0) Professional/Adobe Acrobat Professional.app/Contents/Plug-ins/inpO2.acroplugin
 - Presets
 MacHD/Library/Preferences/inpO2*. *
 - Documentation
 /Applications/Adobe Acrobat 8.0 (or 9.0) Professional/Adobe Acrobat Professional.app/Contents/Plug-ins/Dynagram/inpO2_User_Manual.pdf
 - All Tutorial files are available from the CD.

3.3 Windows

- Before starting the installation, ensure that your USB dongle is NOT connected to your computer.
- If you are upgrading from a previous inpO2 version, you may want to uninstall the old inpO2 application from the Control Panel to ensure a clean new installation.
- Insert the CD and follow the instructions of the Installer, or double-click on “setup.exe” if the installation process does not start automatically.
- At the end of the inpO2 installation, the HASP driver installer will be launched. This installation is required for the proper functioning of the USB hardware key (dongle). Make sure the dongle is not connected until the process is completed.
- NOTE: If you already have a HASP driver installed on your workstation for a third party application, a message will warn you that HASP cannot be installed on this computer. Simply close the dialogue.
- Once the process is completed, inpO2 will be found in Acrobat’s plug-ins folder.
- You can find all inpO2 documentation in the Dynagram subfolder.
- The next step is to activate your license (see Activating inpO2 in section 5 below).
- Here is the list of all installed files on Windows:
 - inpO2 plug-in
 C:\Program Files\Adobe\Acrobat 8.0 (or 9.0)\Acrobat\plug_ins\inpO2.api
 - Presets
 Vista: C:\ProgramData\inpO2*. *
 XP: C:\Documents and Settings\All Users\Application Data\inpO2*. *
 - Documentation
 In C:\Program Files\Adobe\Acrobat 8.0 (or 9.0)\Acrobat\plug_ins\Dynagram\ : inpO2 User_Manual.pdf, Guide_d'utilisation_inpO2.pdf, Manual_de_instrucciones_de_inpO2.pdf.
 - All Tutorial files are available from the CD.

Important Acrobat 8 Setting (Windows only)

- Before working with inpO2, go to Acrobat's preferences dialog by choosing Edit > Preferences. In the Categories list, select Documents and uncheck the first option "Show each document in its own window".

More information: The Multiple Document Interface (MDI) option of Acrobat creates a new Acrobat window for each document. As it may cause serious display problems after opening and closing inpO2 working files, disabling this option in Acrobat's Preferences is highly recommended.

Upgrading from Acrobat 8 to Acrobat 9 (Windows only)

- Users upgrading from Acrobat 8 to Acrobat 9 must explicitly uninstall inpO2 from the control panel and reinstall it after the upgrade to Acrobat 9. To avoid losing the presets catalogue, users should keep a copy of the folder containing the presets files. The paths are as follows:
 - Mac: MacHD\Library\Preferences\inpO2
 - PC Vista: C:\ProgramData\inpO2
 - PC XP: C:\Documents and Settings\All Users\Application Data\inpO2

4. License Activation & Upgrade

4.1 Activating inpO2 Wizard Edition

inpO2 Wizard Edition is activated on line. Before starting the process, ensure that you have an active connection to the internet.

- Launch Acrobat. A form will be displayed for the activation of inpO2.
- Fill all the required fields of the Activation and Registration form.
- Click the Send Activation Request button and expect an e-mail from Dynagram Sales to the address you have provided.

Once you have received your activation code, continue with the following steps.

- Copy the activation code you received by e-mail.
- Launch Acrobat.
- In the dialog box that will appear, paste the activation code in the field and click OK.
- **Note to MacOS users:** To paste the code into the Activation window, use "Control-Click" and select Paste in the contextual menu. Keyboard shortcuts will not work.
- inpO2 Wizard Edition is now activated.

4.2 Activating inpO2

inpO2 Network

See the *Installing inpO2 Network* booklet provided with the HASP-HL Net USB key for all instructions regarding the activation of your multiple-license package.

About inpO2 DEMO

During the 15 first days of the installation, the application has the ability to run in Demo mode if no dongle is connected. The Demo mode has a limited feature set (no PDF output) and does not allow for job production.

The goal of the Demo is to explore product functionalities. It is NOT recommended to work on production jobs using the inpO2 Demo mode, as working files may not be compatible with the registered version that you have purchased, or will purchase.

About inpO2 Dongle and License

As soon as a dongle is connected and the product is activated, the dongle license takes priority over the Demo mode.

The inpO2 dongle is cross-platform, hence it can be connected to a PC or a Macintosh computer.

The USB dongle needs to be connected to your computer and its red light must be on, meaning it is active and installed properly.

The inpO2 dongle driver is installed automatically upon installing inpO2.

If the inpO2 dongle is not connected to a USB port on your computer when you start Adobe Acrobat, the plug-in will be disabled and the inpO2 menu in Acrobat's menu bar will show only the controls needed for product activation. However, if this happens during the 15 first days of the installation, the product will revert to the Demo mode.

To see your license and dongle status, choose About inpO2... from inpO2's menu.

Activation Steps

In order to activate your inpO2 license, you need to send your USB dongle information to Dynagram or to your distributor.

- Connect the dongle to a USB port of your computer.
- Launch Acrobat.
- In Acrobat, choose License... > Create License Request... from the inpO2's menu.
- Browse and save the c2v (customer to vendor) file on your computer, Then, fill out the registration form at : www.dynagram.com/website/register.asp. You will be prompted to upload your c2v file at the end of the registration form. If you purchased your inpO2 product from a third party, please send your activation request and c2v file directly to your distributor. This encrypted file contains the image of your hardware key and all its license history.

Upon receipt of your activation request, Dynagram or your distributor will send you back a v2c (vendor to customer) file that you need to load into inpO2 dongle to activate the license:

- Ensure that your dongle is still connected and choose License... > Install License... from inpO2's menu.
- Browse to the v2c file on your computer and click Open.
- Relaunch Acrobat to activate inpO2 plug-in.

4.3 Upgrading inpO2

The steps needed to upgrade your inpO2 license are the same as for the initial activation, by the exchange of c2v and v2c files (see above section).

It is important to wait for the reception of the v2c file before you install the upgrade otherwise you will not be able to use the product in the meantime, unless you revert to your previous version's installation.

5. Upgrade Compatibility with inpO2 version 1.x or 2.x

Please read carefully this section if you are upgrading from an inpO2 version 1.x or 2.x.

Working files from inpO2 version 1.x can not be reopened in a version 3.x. They must be resaved in v.2.x first.

Working files from inpO2 version 2.x are supported with the following minor restrictions:

- 3580 Text marks will import with a 15 inch box (these boxes were not existing in previous versions). There should be no visual impact on the layout unless the content exceeds 15 inches, in which case it will be cropped.

- 3594 Sheet Center marks that were placed on two sides only in v.2.x (Top/Bottom or Left/Right) will be displayed on all sides when the layout is reopened in v.3.x.
- 3808 Collating marks are now linked to pages and not to gutters. Collating mark offsets from the gutter that were applied in 2.x projects are not retained. New offsets can be applied in v.3 if required.
- 3687 When opening a 2.x project, unavailable documents in the Run List (moved to another location, not accessible on the network or deleted) will revert to Reservation pages. Two solutions are possible:
Open the project in v.2.x and fix broken links before migrating to v.3.x. This option will restore all existing page adjustments.
It is also possible to relink documents manually in v.3.x run list. Any page adjustments will have to be done again.

6. Known Issues and Limitations

Known Issues in Version 3.5.2

Automation manager

- The automation process may, without warning the user, skip files dropped in a hot folder if they are read-only, currently opened in Acrobat (Windows only), or if their security options prevents operations on them.

Known Issues in Version 3.5.1

inpO2 Network

- inpO2 does not release its network dongle license correctly when closing. The license can be reused later on the same workstation but it is not available for another computer ("floating" license). Solution: The License Manager must be relaunched to reset all licenses.

Acrobat Integration

- 2505 On Windows, a crash happens when checking the "Show splash screen" option in Acrobat preferences. It is recommended to leave this option unchecked.

Light Table

- 3806 When using Plates with Sheet Alignment offset values in Perfecting mode, the back of the sheet is not positioned correctly.

Known Limitations with Acrobat API

The following limitations depend on Acrobat API or third-party developers and may not be fixed in the current products versions:

- 0161 Non-modal dialog should capture key strikes such as Ctrl+Z and Up and Down arrows (defect ID 1286202).
- 0166, 0167, 0269 and 2828 There is no Undo possible for inserting or deleting a PDF sheet. This limitation also prevents the use of Undo for actions done through in the Assembly Manager and Layout Manager.
- 0367 inpO2 can not display PDF low-res thumbnails on the light table.

- 1247 When working in centimeters, the sheet size is rounded and incorrect in Acrobat status bar (defect ID 1398771).
- 2194 The Multiple Document Interface (MDI) option that creates a new Acrobat window for each document may cause serious display problems after opening and closing inpO2 working files. Disabling this option in Acrobat's Preferences is highly recommended.
- 3062 Using Acrobat 8, some non-PDF/X documents with custom colour profiles make the application lag indefinitely when used in step & repeat projects (this defect is fixed in Acrobat 9).
- 4381 When working simultaneously with multiple windows or dialogs, Acrobat may, after clicking an action button, yield focus to other applications instead of returning to inpO2.

7. Enhancements and Fixes in v.3.5.0

Below is the complete list of bug fixes and enhancements.

Installation and Protection

- 1282, 2028, 2539, 3714, 3777, 3800, 4083, 4241, 4253, 4254, 4305, 4315, 4349, 4360, 4403, 4423
Various issues related to dongle activation, license status and dongle error messages have been reviewed to ease user experience when installing and upgrading.
- 4136, 4582
inpO2 Installer now offers the choice to install presets in metric system. *See also "1.9 Installed Presets"*
- 4256 Windows only: When selecting Add or Remove Programs from the Control Panel, the version number of installed inpO2 application now displays.
- 4140 Windows only: inpO2 file icons correctly install with higher resolution images.
- 4408 The support for Windows 2000 was deprecated but still appeared in Minimum Requirements. The documentation has been updated.

Save & Load (Export & Import)

- 4271 ATM template export is now available. *See also "1.4 Export to Apogee Template Manager (ATM)"*.

Wizard

- 4196 Blank pages were not added to the run list despite Wizard's summary message. They now appear in the Document Manager.
- 4351 Page group warning occurred with Saddle Stitch binding type. The page group size calculation was modified to exclude spine gutters.
- 4416 Text mark alignment within its box was not flipped correctly on back. Left aligned text is now right aligned on the back, and vice versa.
- 4424 Gripper size value was still applied after disabling gripper area field.
- 4447 Single sided sheet made page group definition unusable in the Page Definition panel.
- 4472 Register marks were placed in sheet corners. The register marks are now placed on sheet side centers to reflect the most common usage.
- 4502 A Page Group snapped to the gripper was offset when using horizontal gutter values with Saddle Stitch binding.

Menus & Tools

- 3759, 3883, 4119, 4172, 4366, 4375, 4379, 4391, 4516
Various enhancements were done to ease Presets creation and savings. *See also "1.5 Simplified Creation of Presets"*.
- 3980 About dialog caused crashes after two consecutive openings.
- 4171, 4450
Checkboxes in Presets dialogs have been simplified by removing Yes/No labels.
- 4229 Unpredictable crashes occurred when using drop-down menus.
- 4385 Press definitions showed inconsistencies for available choices.
- 4413, 4453, 4560
Better dialog display in localized versions and other cosmetic changes.
- 4509 Units in Side Guides and Imported Mark Image Presets did not follow Acrobat's preferences.

Light Table

- 2755 There was no choice for the side guides appearance. inpO2 now offers to use side guides in a way similar to the imported marks. *See also "1.6 Customizable Side Guides"*
- 2849 Side guides depended on the gripper to appear. Side guides are now independent: if there is no gripper, their offset will be measured from the sheet edge.
- 4387 Acrobat crashed when reopening Mark Set tool after deletion of a mark set.
- 4451 Applied marks were not refreshed after saving the layout. The marks are now visible as expected.
- 4511, 4512, 4513
Unpredictable crashes on the light table due to Acrobat's multi-thread actions when processing the layout have been fixed.
- 4565 Register marks: Offset from sheet edge doesn't move anymore center register marks in the group.

Document Manager

- 4461 The warning message when dropping a document in the white space of project tree has been clarified.

Layout Manager

- 3670 User can now edit *Run Length* field in the *Press Run* (ganging) object. *See also "1.8 Editable Run Length in Ganging Optimization"*
- 4473 Product part colors are now displayed on managed layouts when using inpO2 Working Profile.

Assembly Manager

- 2088 Default location for the *Insert* button was "Before Tree Selection". It is now "Inside Tree Selection".
- 4135, 4428, 4430
Unpredictable crashes in the Assembly Manager due to Acrobat's multi-thread actions when processing the layout have been fixed.

Output and Rendering

- 4490 A new destination option for output files delivery has been added. *See also "1.7 New Option for Output File Delivery"*
- 4520 JDF output has been updated to meet revised CIP4 specifications (PlacedObject/@TrimSize).

8. Fix in v.3.5.1 (Windows only)

Assembly Manager

- 4615 Multiple consecutive drag and drop and other tree operations within the same project led the Assembly Manager to an unstable state. The stability has been improved (Windows only).

9. Enhancements and Fixes in v.3.5.2

New Automation Module

- See *1.1 Hot Folder Automation (starting with v.3.5.2)*.

Installer

- 4630 Installer did not detect multiple instances of Acrobat 9. Installer was modified to detect multiple instances.

Layout Manager

- 4620 Right overfold value (SS Finishing Method) gave wrong results on 4x2 layouts or larger. Results are now as expected.

Light Table

- 4440, 4468, 4585
Some tight positioning tasks were difficult or impossible
- 4558 Side guides and center marks overlapping pages were not detected in layout checkpoints.
- 4703 Users could not drop an object if it overlapped the sheet/plate edge (drag-n-drop). This behavior has been allowed. The layout checkpoints will warn the user about the overlap and the output will be allowed. User caution is expected in this situation.

Marks

- 4352 Rotating a page within its group altered its trim and bleed marks. The rotation action of the page contextual menu is no more available. Page head orientation must be changed by using Pagination tool.
- 4395 Text Mark - "Composite Ink list" variable did not reflect final color names when mapping inks. Mapped colors no longer appear in the Composite Ink list variable of a text mark.
- 4589 Some Imported Marks provided with the installer overprinted source documents. These images were corrected (for new installations only).

- 4702 Layouts created in 3.0.X without side guides appearing displayed side guides when opened in 3.5.0. This behavior was corrected.

Output

- 3682 Characters such as colons inserted in the file naming convention caused an invalid output. Characters interfering with the naming convention's reserved characters will be substituted for legal characters.
- 4634, 4373
JDF issues regarding the the JDF specification and the inpO2 licence compatibility. These issues were corrected.
- 4686 The PDF version was not checked for side guides. The side guides PDF files are now verified for PDF version validation.
- 4700 Demo version cannot be "re-activated" when upgrading version. Upgraded demo versions are now supported.

User Interface

- 549, 920
Scientific format was displayed in some objects properties. Decimal format is now used.
- 4604, 4605
Fields were not correctly disabled in some presets properties.
- 4705 In preset dialogs and layout manager, interface widgets needed two clicks to be activated. They now need a single click.

Wizard

- 4110 "All Corner Marks" option was enabled but did not work unless Trim and/or Bleed marks were checked. This option is now disabled if trim and bleed marks are not checked.

10. Enhancements and Fixes in v.3.5.3

Automation

- 4752 A mismatch could happen when different workflows were using the same input folder. Active workflows can no longer use the same input folder as a deactivated one.
- 4756 It was not clear whether a file had been moved for handling by the automation process or not. Now a message displays if a file could not be moved and was skipped.
- 4713, 4763
Workflow fields in Automation sometimes became unselectable or disabled. This behavior has been corrected.

Document Manager

- 4646 Document Manager did not keep its position and size when closed from the toolbar. The dialog now remembers its last state.

Layout Manager

- 4649 Basic edition with "Assembly Planner" module and without "Optimization" module license crashed Acrobat when trying to import flatwork documents in the Layout Manager. The problem is now prevented.

Light Table

- 1484 Zoomed area changed when updating the light table after editing an object or changing the view Profile. Updates of the light table no longer cause zoomed area changes.
- 4764 The rulers showed too much decimal places and overlapped objects. The rulers no longer overlap objects.

Output

- 4684 Output variables "Sheet Number" and "Total Number Of Sheets" displayed different formats. The formats are now the same.

User Interface

- 4475 Enhancement: New option to "Reset Window Positions". inpO2 windows can all be reset to a default position from the Acrobat menu inpO2 | Show / Hide | Reset Window Positions.

Wizard

- 3926, 4766
The page group rotation affected gutters, margins and mark placements (density bar's position). Top, Bottom, Right and Left are now always related to the sheet geometry.
- 3957 Enhancement: It was not possible to place a text mark vertically using the Wizard. The wizard now offers a new "Direction" option in the Text tab of the Marks panel. Users can choose between two vertical and two horizontal directions.

11. Customer Feedback

Your feedback on inpO2 is important to us! Please take the time to send your comments and requests to support@dynagram.com. Thanks in advance!

Dynagram R&D and Support Teams
